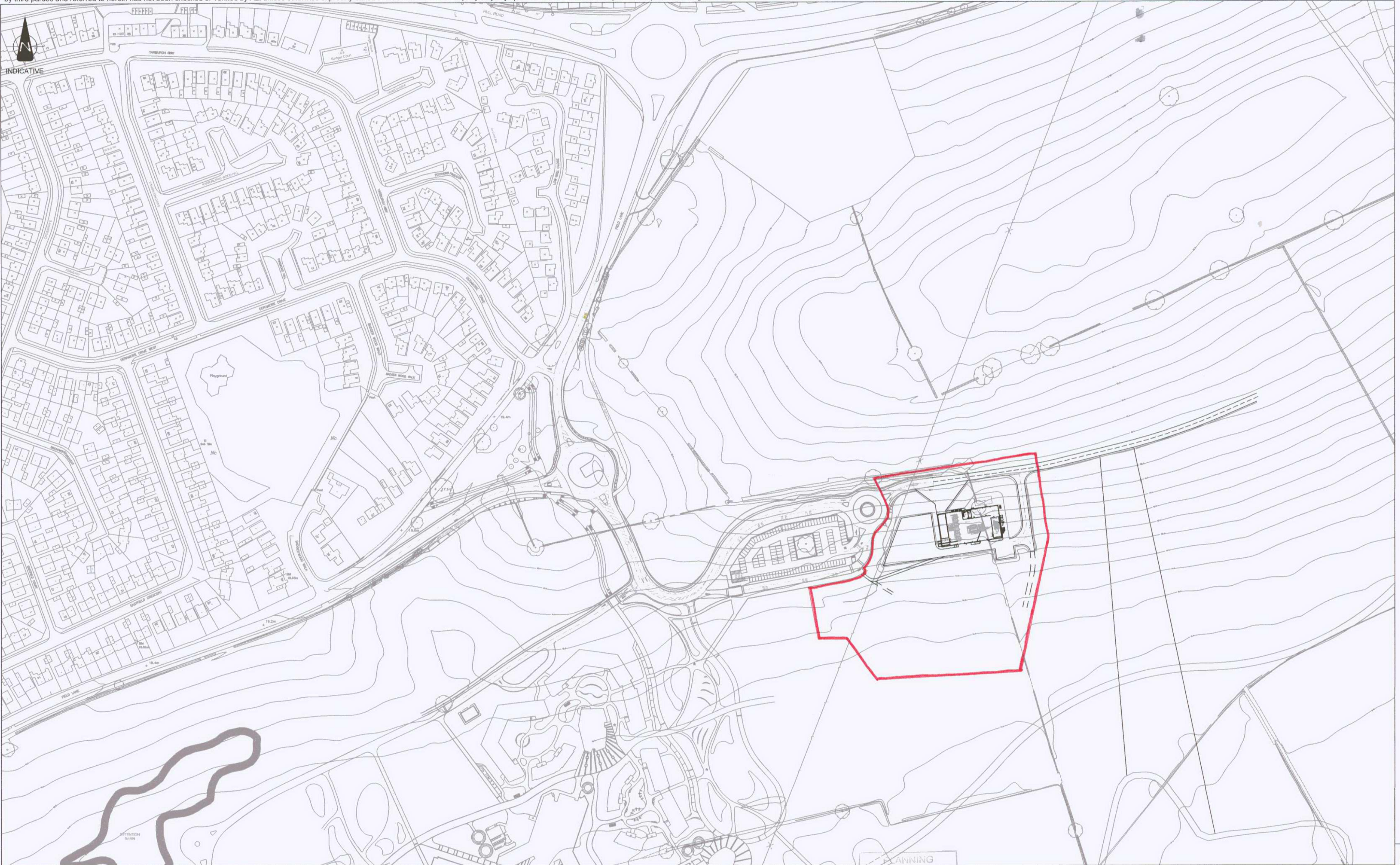


This document has been prepared by AECOM Ltd (AL) for the sole use of our Client (the Client) and in accordance with generally accepted consultancy principles, the budget for fees and the terms of reference agreed between AL and the Client. Any information provided by third parties and referred to herein has not been checked or verified by AL, unless otherwise expressly stated in the document. No third party may rely upon this document without the prior and express written agreement of AL.



Client:
THE UNIVERSITY of York

Project:
Heslington East Campus

Title:
Energy Centre Site Location Plan

St. Christopher House,
 George Cayley Drive,
 Clifton Moor,
 YORK, YO30 4XE
 Tel: +44 (0) 1904 694400
 Fax: +44 (0) 1904 694499
 www.aecom.com

19 AUG 2010
AECOM

Design:	MC	CAD:	MIT
Checked:	MDC	Date:	August 2010
Approved:	SP	Scale:	1:2000 @ A2
Drawing No.	30080-P-356		Rev: J
			A2